









**Manual  
For  
Updater  
&  
Channel Editor**

## 1. Preparations

- A. IBM PC or Compatible with one RS-232C Serial Port  
(115200 Baud Rate should be supported)
- B. OS : Windows 98SE, Windows ME, Windows 2000 or Windows XP
- C. Null Modem Cable (9 Pin Female -to- 9 Pin Female : Pin2 & Pin3 Crossed)
- D. Digital Satellite Receiver

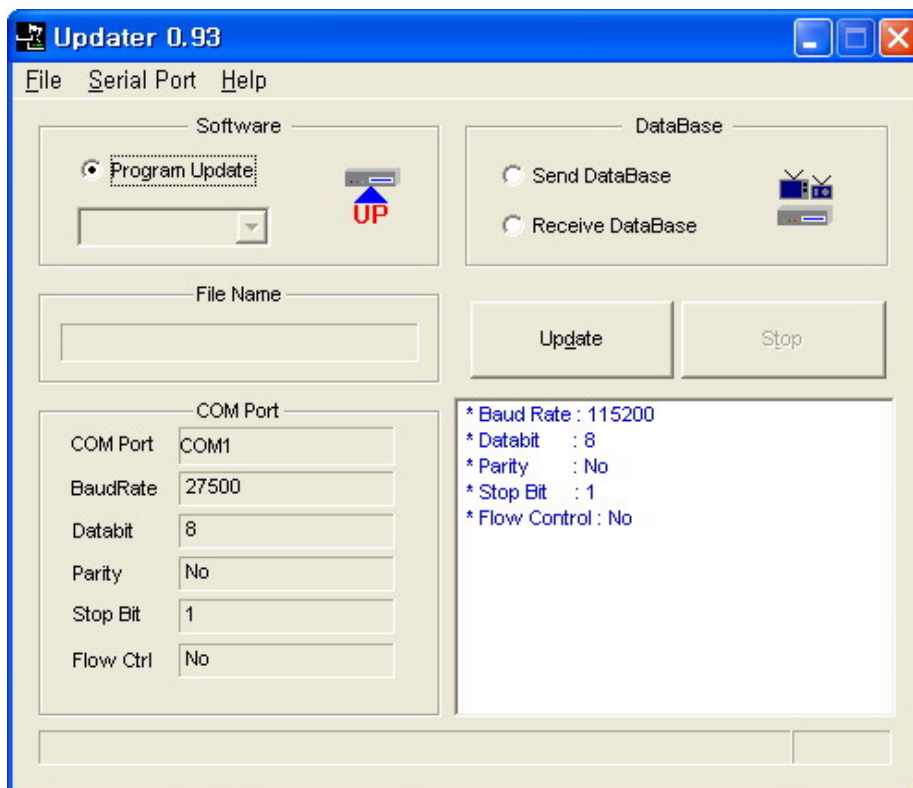
## 2. What would you like to do?

- A. Download SW(Firmware) from PC to Receiver(STB)  
 Refer to Chapter 3-A (Page 2)
- B. Download DB file(SAT, TP, Channel List) from PC to Receiver(STB)  
 Refer to Chapter 3-B (Page 4)
- C. Upload DB file(SAT, TP, Channel List) from Receiver(STB) to PC  
 Refer to Chapter 3-C (Page 5)
- D. Download SW(Firmware) or DB file from STB to STB  
 Refer to Chapter 3-D (Page 7)
- E. Make DB file from SatcoDX file (sdx file) with Channel Editor  
 Refer to Chapter 4 (Page 8)
- F. Edit DB file – Add, Delete, Move Satellites, Transponders and Channels with Channel Editor.  
 Refer to Chapter 5 (Page 9)
- G. DB file from Receiver → Edit → Download DB file  
 Refer to Chapter 3-C (Page 5) → Chapter 5 (Page 9) → Chapter 3-B (Page 4)
- H. DB file with SatcoDX file (sdx file) → Edit → Download DB file  
 Refer to Chapter 4 (Page 8) → Chapter 5 (Page 9) → Chapter 3-B (Page 4)

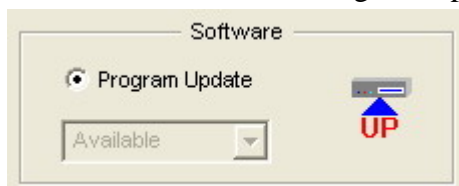
### 3. Download SW(Firmware) & DB (SAT, TP, Channel List)

#### A. Download SW(Firmware) from PC to Receiver(STB)

- ① Connect PC & STB with Null Modem Cable. Don't connect Power to STB at this step.
- ② Execute Updater program by double click on the file list or icon.  
Before you execute Updater, close all other programs running on your PC.
- ③ Then you will see the following window.



- ④ Select COM Port using Serial Port menu.  
Default COM Port is 1.  
You don't have to change COM Port if you are using COM Port 1.
- ⑤ Select Software → Program Update



- ⑥ Select File you want to download using File → Open.

- ⑦ Click in the Update button  and then connect the power to STB within 30 seconds.

\*Tip : STB should be in the Power ON (not in the standby mode) status when its power cord unplugged before starting download.

- ⑧ If downloading starts successfully, you will see,

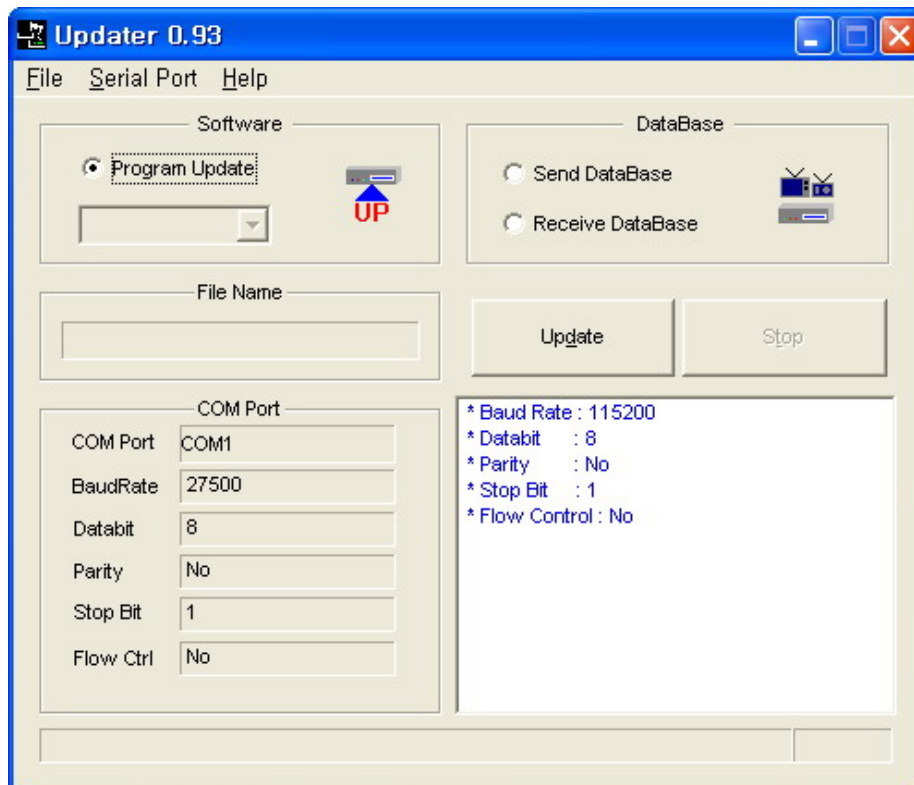


- ⑨ Please wait until downloading is finished successfully.
- **Warning : Do not power off STB until the message of “Completed to update STB!” is shown.**
- ⑩ Now unplug the STB Power and connect Power again to reboot with new Software.

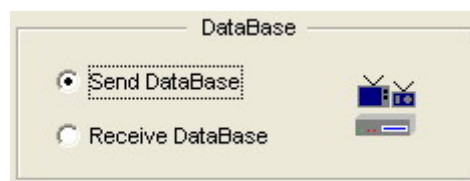
## B. Download DB file (\*.wdb) from PC to Receiver with Updater.

### ① Setting with Updater

- i. Connect PC & STB with Null Modem Cable..
- ii. Execute Updater program by double click on the file list or icon.  
Before you execute Updater, close all other programs running on your PC.
- iii. Then you will see the following window.



- iv. Select COM Port using Serial Port menu.  
Default COM Port is 1.  
You don't have to change COM Port if you are using COM Port 1.
- v. Select DataBase → Send DataBase



- vi. Select File you want to download using File → Open.

## ② Setting with STB

- i. Go to the Menu as follows,

Main Menu → Installation → Database Service

Select « **Receive** » with Left/Right button of RCU

## ③ Start to download

- i. Click
- 
- Button of Updater

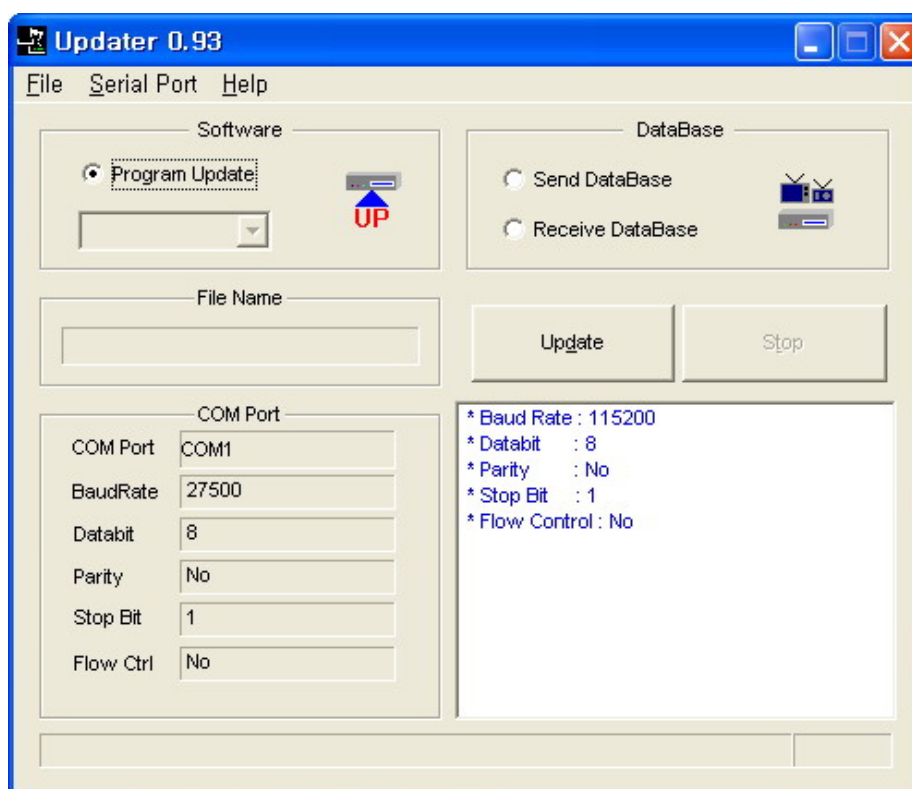
- ii. Press OK Button of RCU

➤ **Warning : Do not power off STB until the message of “Sent Successfully!.”**

### C. Upload DB file (\*.wdb) from Receiver to PC with Updater.

## ① Setting with Updater

- i. Connect PC & STB with Null Modem Cable.
- ii. Execute Updater program by double click on the file list or icon.  
Before you execute Updater, close all other programs running on your PC.
- iii. Then you will see the following window.

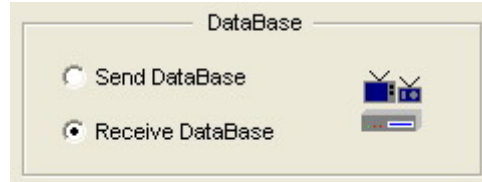


- iv. Select COM Port using Serial Port menu.

Default COM Port is 1.

You don't have to change COM Port if you are using COM Port 1.

- v. Select DataBase → Receive DataBase



- vi. Click “File” → “Open” → write file name you want to create.


## ② Setting with STB

- i. Go to the Menu as follows,

Main Menu → Installation → Database Service

Select « **Send** » with Left/Right button of RCU

## ③ Start to download

- i. Click  Button of Updater
- ii. Press OK Button of RCU

➤ **Warning : Do not power off STB until the message of “Received Successfully!” is shown.**

## D. Download SW(Firmware) or DB from STB to STB

### ① Method 1 : **Master STB setting with RCU**

- i. For Firmware download only  
In Standby mode, Press the following keys of RCU sequentially,  
Back → 1 1 1 8 → Red Button
- ii. For DB only  
In Standby mode, Press the following keys of RCU sequentially,  
Back → 1 1 1 8 → Blue Button
- iii. For Firmware & DB simultaneously  
In Standby mode, Press the following keys of RCU sequentially,  
Back → 1 1 1 8 → Yellow Button

### ② Method 2 : **Master STB setting without RCU**

- i. For Firmware download only  
AC Power Cord Connect while Pressing **Menu Button and OK Button** of the Front Panel simultaneously
- ii. For DB only  
AC Power Cord Connect while Pressing **Left Button and Up Button** of the Front Panel simultaneously
- iii. For Firmware & DB simultaneously  
AC Power Cord Connect while Pressing **Right Button and Power Button** of the Front Panel simultaneously

### ◆ For Slave set

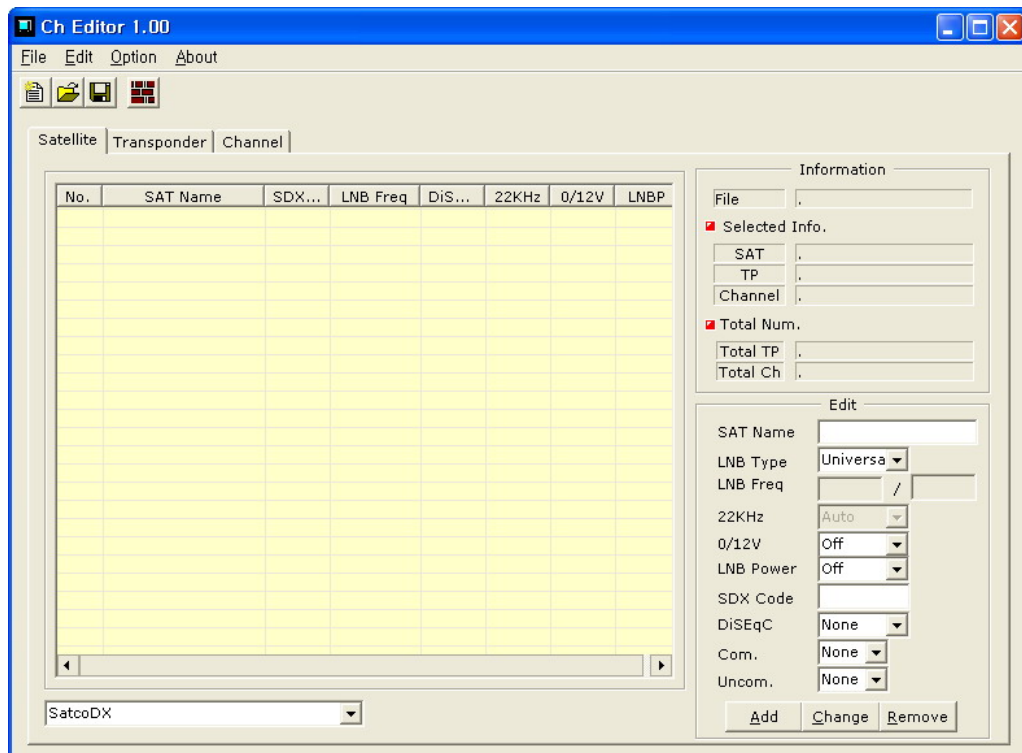
After setting Master Set and connecting serial download cable with Master set, Connect the power cord of Slave Set. Download will be started automatically. After finishing downloading one set, you need to change only the slave sets. (Repeat only the slave process for multiple downloading). Master set will remain same master mode unless you disconnect the power cord of master set.


\*Tip : Slave STB should be in the Power ON (not in the standby mode) status when its power cord unplugged before starting download.

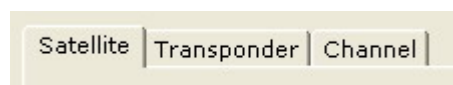


#### 4. Make DB file (\*.wdb) from SatcoDX file (sdx file) with Channel Editor.

- ① First you have to download sdx files from SatcoDX Home page.  
Sdx file downloading is completely up to users.
- ② Execute Channel Editor program by double click on the file list or icon.  
Before you execute Channel Editor, close all other programs running on your PC.
- ③ Then you will see the following window.



- ④ Click “File” → “Open wdb/sdx File” or  .
- ⑤ Select sdx file you want add up to your DB file. Then Satellite, Transponder and Channel List information in that sdx file will be added.
- ⑥ Repeat process “4 & 5” as many as you want to add. (Max. 64 Satellites, 1600 Transponders available)
- ⑦ You can see Satellites, Transponders and Channel list information by select Satellite, Transponder, Channel Tap.

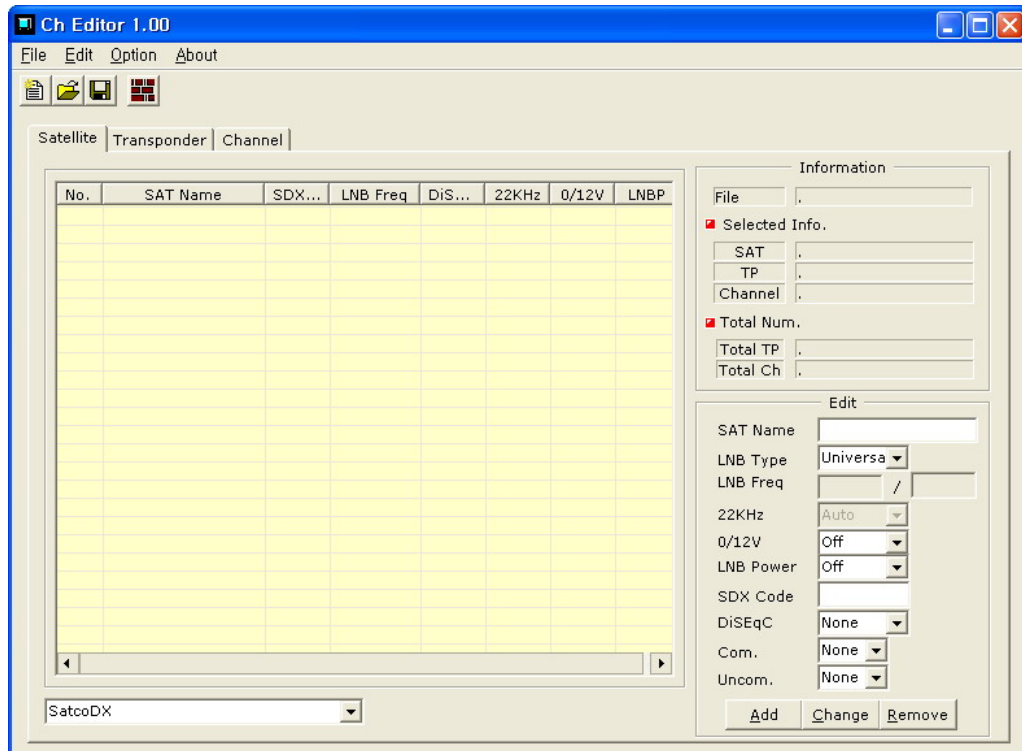


- ⑧ To save file, Click “File” → “save(\*.wdb) or 

## 5. Edit DB file with DB file (\*.wdb)

### - Add, Delete, Move Satellites, Transponders and Channels

- ① Execute Channel Editor program by double click on the file list or icon.  
Before you execute Channel Editor, close all other programs running on your PC.
- ② Then you will see the following window.



- ③ Click “File” → “Open wdb/sdx File” or .

- ④ Select wdb file you want to edit.

- ⑤ To Edit Satellite

#### A. To Add Satellite.

- i. Write Satellite name in the following box.

- ii. Then click  button.

#### B. To Change Satellite name.

- i. Click on the Satellite list you want to edit, then write Satellite name in the following box.

- ii. Then click **Change** button.

C. To Delete Satellite.

- i. Click on the Satellite list to delete.

- ii. Then click **Remove** button.

⑥ To Edit Transponder

- Go to Transponder list by click Transponder Tab.

A. To Add Transponder

- i. Write Transponder parameters in the following box.

- ii. Then click **Add** button.

B. To change Transponder parameters.

- i. Click on the Transponder list you want to edit, then write down new parameters in the following box.

- ii. Then click **Change** button.

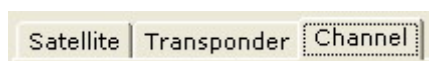
C. To delete Transponder

- i. Click on the Transponder list to delete.

- ii. Then click **Remove** button.

⑦ To Edit Channel list

- Go to Channel list by click Channel Tab.



A. To Add Channel

- i. Write Channel parameters in the following box.


- ii. Then click  button.

B. To Change Channel parameters.


- i. Write Channel parameters in the following box.

- ii. Then click  button.

C. To Delete Channel.

- i. Click on the Channel list to delete
- ii. Then click  button.

- ⑧ To move Satellite, Transponder, Channel order, Click and Drag & Drop at any Satellite, Transponder, Channel list.

- ⑨ To Sort, click .

- i. Satellite and Channel list will be sorted by alphabetical order.
- ii. Transponder list will be sorted by V/H first and then by frequency.